

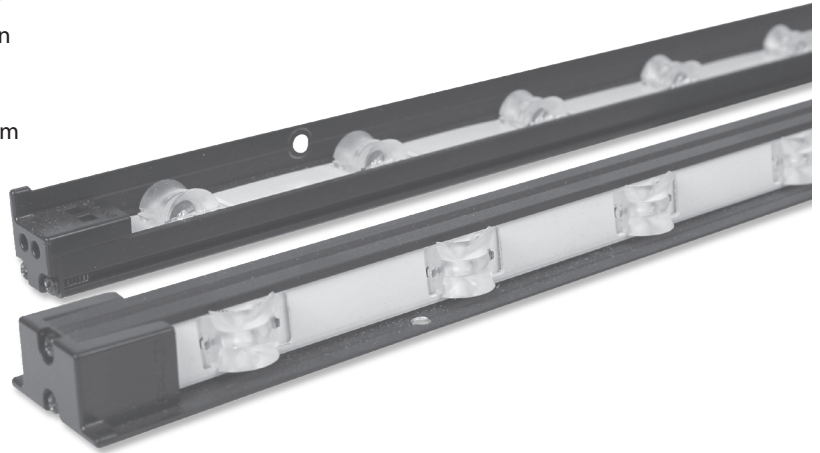
Cold Door 4

LED lighting system for cooler doors

Product description

Cold Door 4 LED lighting system provides the perfect balance of intensity and color rendition to deliver crisp, uniform illumination across doors for walk-in coolers/freezers and remote glass-door reach-ins. Cold Door 4 is available in 3500 K, 4000 K, and 5000 K color temperatures, and comes in lengths of 1.2, 1.5, 1.7, and 1.8-m (4, 5, 6, and 7-ft), ensuring solutions for all door sizes.

- Delivers bright, uniform light, vibrant color, and reduced glare to product facings at depths as shallow as 2" (50 mm)
- High efficacy up to 148 lm/W allows powering of up to 5-door frames on a single power supply
- Energy savings of up to 85% compared with typical fluorescent fixtures and 30%+ over older LED systems



Ordering information

Example: 701906-4WC5V4

701906-						
Product	Color temp. (CCT)	Type	Length			
			ECO	Performance	French Door	
	35W 3500 K	C Center	4V4 4-ft (1.2-m)	4X4 4-ft (1.2-m)	4F4 4-ft (1.2-m)	
	4W 4000 K		E End	5V4 5-ft (1.5-m)	5X4 5-ft (1.5-m)	5F4 5-ft (1.5-m)
	5W 5000 K			6V4 6-ft (1.7-m)	6X4 6-ft (1.7-m)	6F4 6-ft (1.7-m)
			7V4 7-ft (1.8-m)	7X4 7-ft (1.8-m)	7F4 7-ft (1.8-m)	

Dimming

For more information on these items, see Cold Series Dimming Control spec sheet.

[LEARN MORE](#)



Part number	Description
701890-PWR	Dimming controller [†]
400661[†]	Occupancy sensor, standard
400964[†]	Occupancy sensor, wide

[†] Must be used in conjunction with associated dimming controller.
[‡] Also functions as a power controller.

Power Supplies

Standard			Integrated dimming		
Part number	Description	Dimensions (L x W x H)	Part number	Description	Dimensions (L x W x H)
701895-60SI[†]	Power Supply, 60 W 24 VDC, compact	5.8" x 1.8" x 1.0" (147 x 46 x 25 mm)	701895-60SID[§]	Power Supply, 60 W 24 VDC, dimming, compact	5.8" x 1.8" x 1.0" (147 x 46 x 25 mm)
701895-100LI[†]	Power Supply, 100 W 24 VDC 4.15 A, compact, economy	9.5" x 1.7" x 1.0" (241 x 43 x 25 mm)	701895-100LID[§]	Power Supply, 100 W 24 VDC, dimming, compact, economy	9.5" x 1.7" x 1.0" (241 x 43 x 25 mm)

* May be dimmed using 701890-PWR, 400661, and 400964.
[§] 701895-60SID and 701895-100LID power supplies compatible with third party 0-10 V dimming systems.



Visit product page for details.



SloanLED
 Leaders in LED Technology

Cold Door 4

LED lighting system for cooler doors

Product specifications

Electrical

Input voltage 100-277 VAC (to power supply)

Fixture voltage 24 VDC

	Size	Lumens			System power			Efficacy		
		3500 K	4000 K	5000 K	3500 K	4000 K	5000 K	3500 K	4000 K	5000 K
ECO	4' (1.2 m) Center	1327.5	1,333.9	1,347	9.31 W	9.21 W	9.12 W	143 lm/W	145 lm/W	148 lm/W
	4' (1.2 m) End	663.7	667	673.5	4.65 W	4.61 W	4.56 W			
	5' (1.5 m) Center	1,787.7	1,796.3	1,814	12.54 W	12.41 W	12.28 W			
	5' (1.5 m) End	893.8	898.2	907	6.27 W	6.2 W	6.14 W			
	6' (1.7 m) Center	1,787.7	1,796.3	1,814	12.54 W	12.41 W	12.28 W			
	6' (1.7 m) End	893.8	898.2	907	6.27 W	6.2 W	6.14 W			
	7' (1.8 m) Center	1,787.7	1,796.3	1,814	12.54 W	12.41 W	12.28 W			
	7' (1.8 m) End	893.8	898.2	907	6.27 W	6.2 W	6.14 W			
Performance	4' (1.2 m) Center	1,700.4	1,716.6	1,745	12.98 W	12.88 W	12.76 W	131 lm/W	133 lm/W	137 lm/W
	4' (1.2 m) End	850.2	858.3	872.5	6.49 W	6.44 W	6.38 W			
	5' (1.5 m) Center	2,055	2,073	2,109	15.69 W	15.56 W	15.42 W			
	5' (1.5 m) End	1,027.5	1,036.5	1,054.5	7.84 W	7.78 W	7.71 W			
	6' (1.7 m) Center	2,409.5	2,432.7	2,473	18.39 W	18.25 W	18.08 W			
	6' (1.7 m) End	1,204.8	1,216.4	1,236.5	9.2 W	9.13 W	9.04 W			
	7' (1.8 m) Center	2,591	2,615.8	2,659.1	19.78 W	19.63 W	19.44 W			
	7' (1.8 m) End	1,295.5	1,307.9	1,329.6	9.9 W	9.82 W	9.72 W			
French Door	4' (1.2 m) Center	2,197	2,220	2,266.1	16.29 W	16.29 W	16.3 W	135 lm/W	136 lm/W	139 lm/W
	4' (1.2 m) End	1,098.5	1,110	1,133.1	8.14 W	8.15 W	8.15 W			
	5' (1.5 m) Center	2,654.9	2,682.7	2,738.4	19.68 W	19.69 W	19.69 W			
	5' (1.5 m) End	1,327.5	1,341.4	1,369.2	9.84 W	9.85 W	9.85 W			
	6' (1.7 m) Center	3,112.8	3,145.4	3,210.6	23.08 W	23.08 W	23.09 W			
	6' (1.7 m) End	1,556.4	1,572.7	1,605.3	11.54 W	11.54 W	11.54 W			
	7' (1.8 m) Center	3,341	3,376	3,446	24.77 W	24.78 W	24.78 W			
	7' (1.8 m) End	1,670.5	1,688	1,723	12.39 W	12.39 W	12.39 W			

Performance

Operating temperature -13° F to 122° F (-25° C to 50° C)

Life rating >60,000 hours (L₇₀) at maximum operating conditions*

Dimming Optional Motion Sensing
(see Cold Series Dimming Control spec sheet)

Construction

Housing Aluminum / PC

Lens PMMA

Body color Black (White cover)

Mounting

Mounting #8 (4 mm) sheet metal screws (not included)

Documentation

Warranty 5-year limited and Performance+ Turnkey Service Warranty†

Agency listings cULus, DesignLights Consortium® (DLC)‡, UL (NSF/ANSI 2), CE, RoHS

Files available LM-79, LM-80, IES

* Calculated from LM80 data.

† DLC based on 120 V.

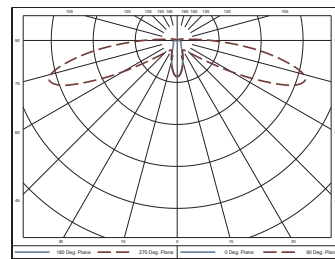
‡ Performance+ Turnkey Service Warranty applies to U.S. & Canada installations ONLY.

Lighting

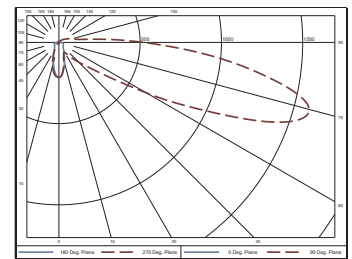
Color temperatures (CCT) 3500 K, 4000 K, 5000 K

Color rendering >80 CRI

Polar Plots



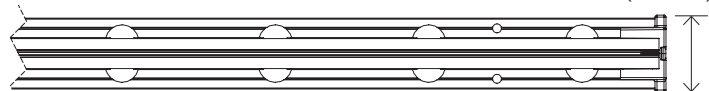
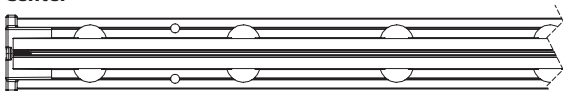
Center



End

Dimensions

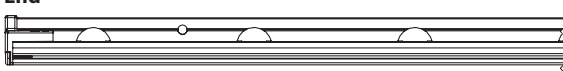
Center



0.72"
(18.3 mm)



End



0.72"
(18.3 mm)



→ **4-ft (1.2-m)** 48" (1219.2 mm) ←
5-ft (1.5-m) 58" (1473.2 mm)
6-ft (1.7-m) 68" (1727.2 mm)
7-ft (1.8-m) 73" (1854.2 mm)

Cold Door 4

LED lighting system for cooler doors

Power Supply Loading

ECO

Total power (W, DC)	Doors per frame				
	5	4	3	2	1
Door height					
4' (1.2 m)	37.5	30.0	22.5	15.0	7.5
5' (1.5 m)	50.5	40.4	30.3	20.2	10.1
6' (1.7 m)	50.5	40.4	30.3	20.2	10.1
7' (1.8 m)	50.5	40.4	30.3	20.2	10.1

Performance

Total power (W, DC)	Doors per frame				
	5	4	3	2	1
Door height					
4' (1.2 m)	52.5	42.0	31.5	21.0	10.5
5' (1.5 m)	63.4	50.8	38.1	25.4	12.7
6' (1.7 m)	74.4	59.5	44.6	29.8	14.9
7' (1.8 m)	79.8	63.9	47.9	31.9	16.0

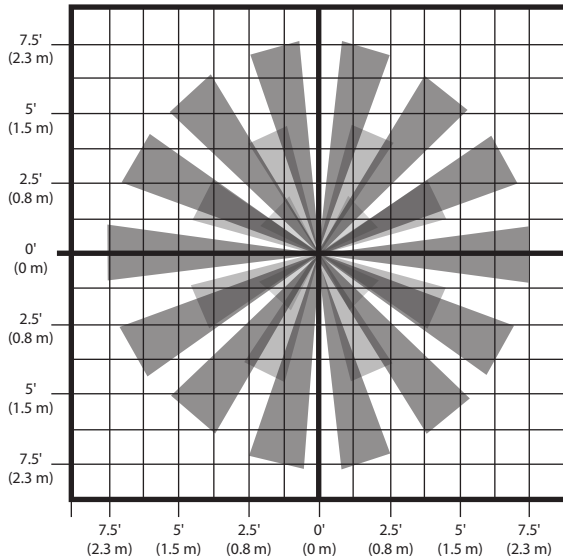
French Door

Total power (W, DC)	Doors per frame		
	6	4	2
Door height			
4' (1.2 m)	42.8	28.5	14.3
5' (1.5 m)	51.7	34.4	17.2
6' (1.7 m)	60.6	40.4	20.2
7' (1.8 m)	65.0	43.3	21.7

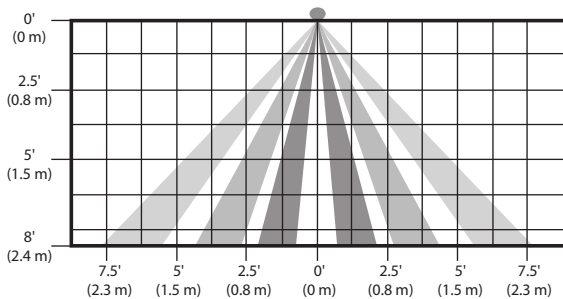
□ 60 W power supply □ 100 W power supply

Sensor Coverage Patterns

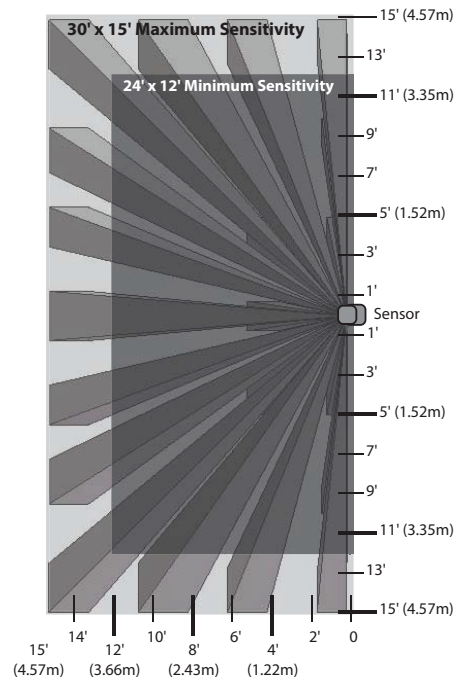
Top view
400661



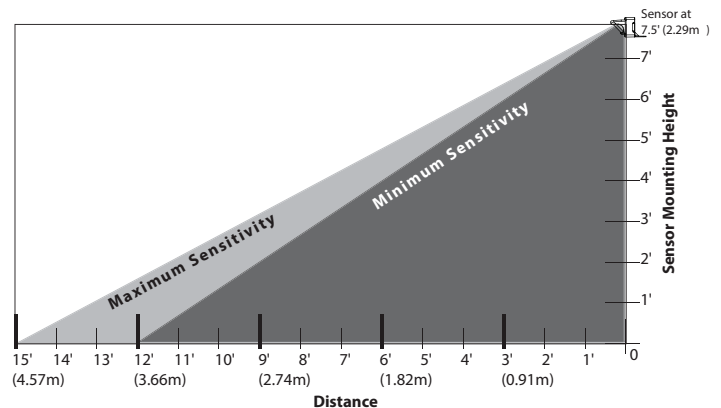
Side view
400661



Top view
400964



Side view
400964



SloanLED Headquarters
5725 Olivias Park Drive, Ventura, CA, USA
805.676.3200 • info@SloanLED.com

SloanLED Europe b.v.
Argonstraat 110, 2718 SN Zoetermeer, NL
+31 88 12 44 900 • europe@SloanLED.com

SloanLED.com

SloanLED
Leaders in LED Technology