

# Single End Flex Lamp

Commercial Grade LED T8 Lamp



## Features & Benefits

- Type A mode: Compatible with electronic ballast VE259MVHIP and VE259120HIP
- Type B mode: Internal Driver (Direct 120-277VAC input)
- Accessory: Fa8 and R17d End Cap Adapter Converter, Mounting Clip
- Glass tube with ArmorCoat Shatterproof Coating
- Long life
- High CRI
- Instant on, no delay or warm up time
- Convenient and quick installation
- Works in cold temperature applications
- Compatible with controls and sensors
- Glass tube for superior optical performance
- 5 Year Warranty

## Product Certification



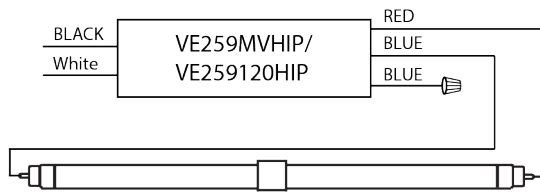
\* EMERGENCY BALLAST RESTRICTIONS

## Specification

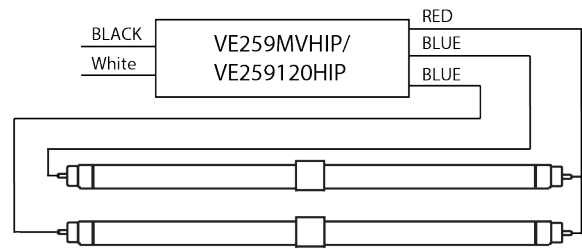
Order Code	Length	Input Voltage	Power Direct AC	Power w/ Ballast	CCT	Lumen	CRI	Beam Angle	Lamp Efficacy Direct AC	System Efficacy w/ Ballast	Life
L96T8HO/830/42G-AB	96	120-277V	42	45	3000K	5500	83	325	130	122	50000
L96T8HO/835/42G-AB	96	120-277V	42	45	3500K	5500	83	325	130	122	50000
L96T8HO/840/42G-AB	96	120-277V	42	45	4000K	5500	83	325	130	122	50000
L96T8HO/850/42G-AB	96	120-277V	42	45	5000K	5500	83	325	130	122	50000

## Wiring Diagram

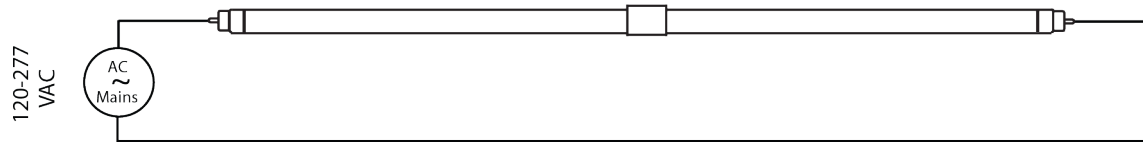
1-LAMP VE259MVHIP/VE250120HIP Wiring (Type A mode)



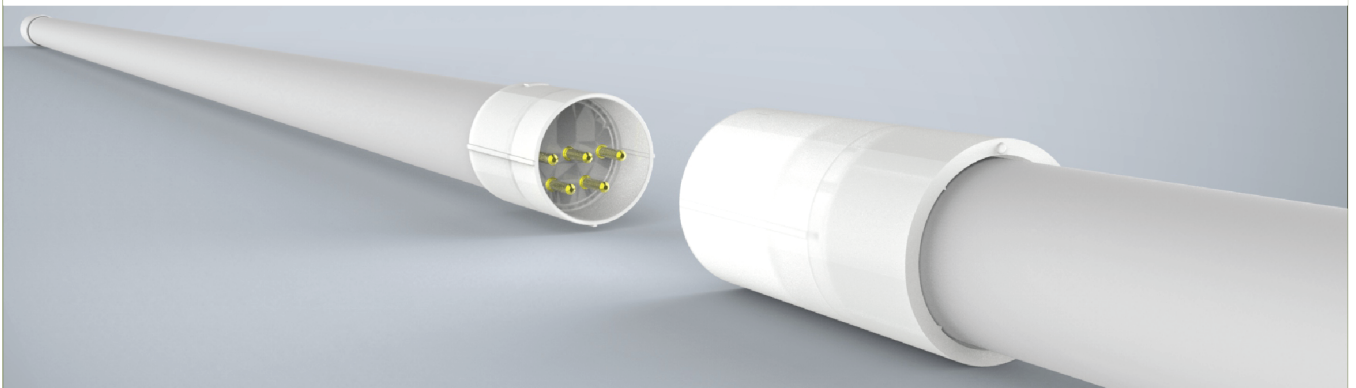
2-LAMP VE259MVHIP/VE250120HIP Wiring (Type A mode)



1-LAMP 120-277Vac Direct Wiring (Type B mode)



Assembling Demonstration



## Dlc Information

Order Code	DLC Product ID	DLC Product Model	DLC Version
N/A	N/A	N/A	N/A
N/A	N/A	N/A	N/A
N/A	N/A	N/A	N/A
N/A	N/A	N/A	N/A