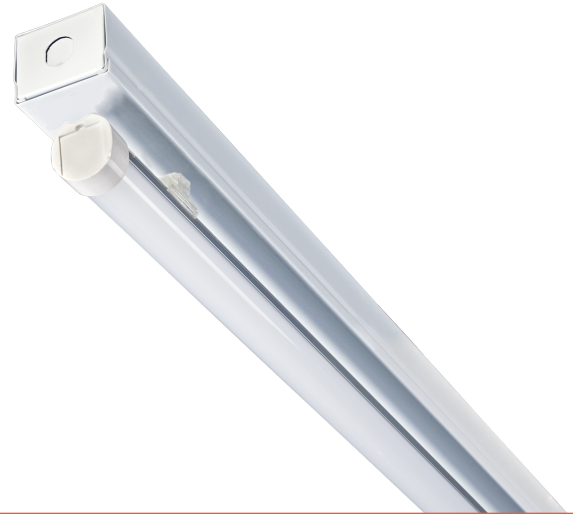


### Key Features & Benefits:

- Housing:
  - Strip fixture dimensions (48" x 1.625" x 2.75")
  - Die-formed and embossed code 22 gauge steel
  - Finish is high reflectance baked white enamel
- Gear Tray:
  - Flat heavy gauge die-formed code grade steel for all components
  - Easy Access for quick installation
- Long Life:
  - 10 year warranty (12 hour run times)
  - 7 year warranty (24 hour run times)
- 0-10V Dimming Available in Specific Models
- Control Options:
  - Photocell
  - Occupancy
- Emergency Capable
- 3/4" Knockouts on Both Ends



Project: \_\_\_\_\_ Date: \_\_\_\_\_  
 Catalog #: \_\_\_\_\_  
 Notes: \_\_\_\_\_



### Electrical Data:

#### Light Specifications:

Lumen Output: Up to 1,995 Lumens  
 Efficacy (lm/W): Up to 133 Lumens per Watt  
 Kelvin: 3000K, 3500K, 4000K, 5000K  
 Color Rendering Index (CRI): >82  
 Rated Life: > 80,000 hrs

#### Driver Data:

Input Voltage: 120-277 VAC  
 Input Power: 15W  
 Input Current @ 120V: 0.125 Amps  
 Input Current @ 240V: 0.063 Amps  
 Input Current @ 277V: 0.0542 Amps  
 Total Harmonic Distortion (THD): <10%  
 Power Factor: >0.99  
 Operating Temperature: -4 ~ 122°F

### Catalog Data:

ITEM#	WATTS	LUMEN OUTPUT	EFFICACY (lm/W)	KELVIN
ESL-Ti-NBS4-S-15W-F30	15W	1,950	130	3000K
ESL-Ti-NBS4-S-15W-F35	15W	1,950	130	3500K
ESL-Ti-NBS4-S-15W-F40	15W	1,965	131	4000K
ESL-Ti-NBS4-S-15W-F50	15W	1,995	133	5000K

\* Made in the USA option available upon request

### Ordering Guide:

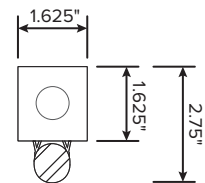
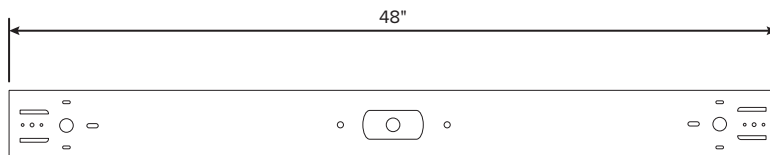
<b>ESL</b>	-	<b>Ti</b>	-	<b>NBS4</b>	-	<b>S</b>	-	<b>15W</b>	-	<b>F</b>	-		-	
ESL		TYPE		SERIES		LISTING		WATTS		LENS		KELVIN		OPTIONS
		Ti Series		NBS4		S		15W (15 Watts)		F (Frosted)		30 (3000 Kelvin) 35 (3500 Kelvin) 40 (4000 Kelvin) 50 (5000 Kelvin)		

Example Part Number: ESL-Ti-NBS4-S-15W-F30

### Options (Add as Suffix):

- **Emergency:**
    - ESL-EMG-DC-8W (External emergency backup)
  - **Sensors:**
    - ESL-1OCC (External Occupancy Sensor)
    - ESL-4OCC (Microwave Occupancy Sensor)
    - ESL-4OPH (Photocell)
    - ESL-4OCP (Photocell & Microwave Occupancy Sensor)
  - **Cord Sets:\***
    - ESL-CS3W-6 (Cord Set, White, 3 wire, 6 foot)
    - ESL-CS3W-6P (Cord Set, White, 3 wire, 6 foot, Standard Plug)
    - ESL-CS3W-12 (Cord Set, White, 3 wire, 12 foot)
    - ESL-CS3W-12P (Cord Set, White, 3 wire, 12 foot, Standard Plug)
  - **Whips: Flexible Conduit:**
    - ESL-WP3-6 (Whip, 3 wire, 6 foot)
    - ESL-WP3-12 (Whip, 3 wire, 12 foot)
  - **Mounting:**
    - ESL-VH01 (V-Hangers sets)
    - ESL-JC01 (Jack Chain - per foot)
    - ESL-HB-PM01 (Pendant Mounting)
  - **Miscellaneous:**
    - ESL-SPD-277-1 (Surge Protector; 100-277V)
    - ESL-480V-SD01 (480 Volt Step Down Transformer)
- \*Other lengths and black cord available upon request

### Dimensions:



### 2' - STRIP SERIES



NARROW SINGLE LAMP BODY	SERIES	PART NUMBER	WATTS	(lm/W)*	LUMEN OUTPUT*
	TI NBS2	ESL-Ti-NBS2-S-10W-FXX	10	133	1,330
	TI NBS2	ESL-Ti-NBS2-S-13W-FXX	13	133	1,729
—WIDE— SINGLE LAMP BODY	SERIES	PART NUMBER	WATTS	(lm/W)*	LUMEN OUTPUT*
	TI WBS2	ESL-Ti-WBS2-S-10W-FXX	10	133	1,330
	TI WBS2	ESL-Ti-WBS2-S-13W-FXX	13	133	1,729
—WIDE— TWO LAMP BODY	SERIES	PART NUMBER	WATTS	(lm/W)*	LUMEN OUTPUT*
	TI WBS2	ESL-Ti-WBS2-S-20W-FXX	20	133	2,660
	TI WBS2	ESL-Ti-WBS2-S-26W-FXX	26	133	3,458

### 4' - STRIP SERIES



NARROW SINGLE LAMP BODY	SERIES	PART NUMBER	WATTS	(lm/W)*	LUMEN OUTPUT*
	TI NBS4	ESL-Ti-NBS4-S-13W-FXX	13	133	1,729
	TI NBS4	ESL-Ti-NBS4-S-15W-FXX	15	133	1,995
	TI NBS4	ESL-Ti-NBS4-S-18W-FXX	18	133	2,394
	TI NBS4	ESL-Ti-NBS4-S-22W-FXX	22	133	2,926
	TiHO NBS4	ESL-TiHO-NBS4-S-30W-FYY	30	126	3,780
—WIDE— SINGLE LAMP BODY	SERIES	PART NUMBER	WATTS	(lm/W)*	LUMEN OUTPUT*
	TI WBS4	ESL-Ti-WBS4-S-13W-FXX	13	146	1,818
	TI WBS4	ESL-Ti-WBS4-S-15W-FXX	15	143	2,101
	TI WBS4	ESL-Ti-WBS4-S-18W-FXX	18	143	2,473
	TI WBS4	ESL-Ti-WBS4-S-22W-FXX	22	138	2,862
	TiHO WBS4	ESL-TiHO-WBS4-S-30W-FYY	30	144	4,089
—WIDE— TWO LAMP BODY	SERIES	PART NUMBER	WATTS	(lm/W)*	LUMEN OUTPUT*
	TI WBS4	ESL-Ti-WBS4-S-26W-FXX	26	144	3,587
	TI WBS4	ESL-Ti-WBS4-S-30W-FXX	30	139	3,939
	TI WBS4	ESL-Ti-WBS4-S-36W-FXX	36	139	4,746
	TI WBS4	ESL-Ti-WBS4-S-44W-FXX	44	134	5,793
	TiHO WBS4	ESL-TiHO-WBS4-S-60W-FYY	60	140	8,522

### 8' - STRIP SERIES



—WIDE— TWO LAMP BODY	SERIES	PART NUMBER	WATTS	(lm/W)*	LUMEN OUTPUT*
	TI WBS8	ESL-Ti-WBS8-S-26W-FXX	26	146	3,528
	TI WBS8	ESL-Ti-WBS8-S-30W-FXX	30	143	4,031
	TI WBS8	ESL-Ti-WBS8-S-36W-FXX	36	143	4,975
	TI WBS8	ESL-Ti-WBS8-S-44W-FXX	44	140	5,944
	TiHO WBS8	ESL-TiHO-WBS8-S-60W-FYY	60	144	8,538
—WIDE— TWO LAMP BODY	SERIES	PART NUMBER	WATTS	(lm/W)*	LUMEN OUTPUT*
	TI WBS8	ESL-Ti-WBS8-S-52W-FXX	52	144	6,898
	TI WBS8	ESL-Ti-WBS8-S-60W-FXX	60	139	8,559
	TI WBS8	ESL-Ti-WBS8-S-72W-FXX	72	139	9,701
	TI WBS8	ESL-Ti-WBS8-S-88W-FXX	88	134	11,690
	TiHO WBS8	ESL-TiHO-WBS8-S-120W-FYY	120	140	17,154

\* At 5000K. See spec sheets for other kelvins  
XX = 30, 35, 40, or 50 for kelvin temperature  
YY = 40 or 50 for kelvin temperature