



# LED OUTDOOR BACK-LIGHT WALL SCONCE

## LWS27B series

► **DESIGN** - LED OUTDOOR BACK-LIGHT WALL SCONCE has a modern, multipurpose design and a stylish look with efficient lighting. The acrylic lens faced sideways and wallward grant you even ambient light distribution. It is designed to operate on 120-277V circuits and provides smooth triac dimming ranging from 10% to 100%.

► **COLOR SELECTABLE** - You can choose either a 3,000K warm white, 4000K cool white or 5000K daylight color temperature.

► **INSTALLATION** - Quick and easy installation, the fixture can be installed on standard 2.75" or 3.5" outlet box. The additional mounting holes provide secure installation options.

► **APPLICATION** - The fixture is rated for Wet Locations, making it perfect for indoor and outdoor projects such as decks, front doors, porches, patios, corridors, walkways, or any other common areas.

► **ADVANTAGES** - With a lifespan of 50,000 hours, these fixtures are made to last decades under normal operation! ASD provides a 5-year limited warranty along with ETL certification to guarantee top quality products and safety!



## PRODUCT PRESENTATION:

Model	Size	Power	Voltage	Dimming	Lumens	CCT	Finish	Dimensions	Certification
ASD-LWS27B-18D18BK	18 inch	18W	120-277V	TRIAC	1,272lm	3CCT (3,000/4,000/5,000K)	Black	18" x 3-1/8" x 2-1/4"	ETL (4001256)
ASD-LWS27B-24D24BK	24 inch	24W	120-277V	TRIAC	1,605lm	3CCT (3,000/4,000/5,000K)	Black	24" x 3-1/8" x 2-1/4"	ETL (4001256)
ASD-LWS27B-36D30BK	36 inch	30W	120-277V	TRIAC	1,945lm	3CCT (3,000/4,000/5,000K)	Black	36" x 3-1/8" x 2-1/4"	ETL (4001256)
ASD-LWS27B-48D36BK	48 inch	36W	120-277V	TRIAC	2,880lm	3CCT (3,000/4,000/5,000K)	Black	48" x 3-1/8" x 2-1/4"	ETL (4001256)
ASD-LWS27B-72D40BK	72 inch	40W	120-277V	TRIAC	2,469lm	3CCT (3,000/4,000/5,000K)	Black	72" x 3-1/8" x 2-1/4"	ETL (4001256)

## TECHNICAL PARAMETERS:

Model	Work environment	Operating temperature	Power factor	Surge protection	Housing	Lens	CRI
ASD-LWS27B-18D18BK	Wet location	-40°F to 113°F (-40°C to 45°C)	> 0.9	1.25 kV	Steel	Acrylic	> 80
ASD-LWS27B-24D24BK	Wet location	-40°F to 113°F (-40°C to 45°C)	> 0.9	1.25 kV	Steel	Acrylic	> 80
ASD-LWS27B-36D30BK	Wet location	-40°F to 113°F (-40°C to 45°C)	> 0.9	1.25 kV	Steel	Acrylic	> 80
ASD-LWS27B-48D36BK	Wet location	-40°F to 113°F (-40°C to 45°C)	> 0.9	1.25 kV	Steel	Acrylic	> 80
ASD-LWS27B-72D40BK	Wet location	-40°F to 113°F (-40°C to 45°C)	> 0.9	1.25 kV	Steel	Acrylic	> 80

## ORDERING INFORMATION

Model	Product dimensions	Weight	Pcs. per carton	Carton size	Carton weight	UPC	GTIN 14
ASD-LWS27B-18D18BK	18" x 3-1/8" x 2-1/4"	3.6 lbs (1.6 kg)	2	23.6" x 7.1" x 10.6"	10.7 lbs	810128114721	10810128114728
ASD-LWS27B-24D24BK	24" x 3-1/8" x 2-1/4"	4.7 lbs (2.1 kg)	2	29.5" x 7.1" x 10.6"	13.4 lbs	810128114752	10810128114759
ASD-LWS27B-36D30BK	36" x 3-1/8" x 2-1/4"	6.9 lbs (3.1 kg)	2	41.3" x 7.1" x 10.6"	18.3 lbs	810128114769	10810128114766
ASD-LWS27B-48D36BK	48" x 3-1/8" x 2-1/4"	9.1 lbs (4.1 kg)	1	52.8" x 6.3" x 4.7"	11 lbs	810128114776	-
ASD-LWS27B-72D40BK	72" x 3-1/8" x 2-1/4"	14 lbs (6.4 kg)	1	76.8" x 6.3" x 4.7"	15.8 lbs	810128114783	-

For most up-to-date spec sheets please refer to [asd-lighting.com](http://asd-lighting.com)



# LED OUTDOOR BACK-LIGHT WALL SCONCE

LWS27B series

## INSTALLATION GUIDE

### IMPORTANT SAFETY INFORMATION:

Please read all the instructions below before installation!

- ▶ Make sure that the supply voltage corresponds to the rated product voltage.
- ▶ The product must be installed by a qualified electrician in accordance with the National Electrical Code and corresponding local codes.
- ▶ If the product is damaged, do not use it.

### ⚠ WARNING

**Risk of personal injury** – read and follow all warnings and installation instructions. Keep or give to the owner for future reference.

**Risk of cuts:** Wear gloves to prevent cuts or abrasions when removing from carton, handling, installing, and maintaining this product.

**Risk of electric shock:** This product must be installed in accordance with the applicable installation code by a person familiar with the construction and operation of the product and the hazards involved.

**Risk of Fire:** Minimum 194°F supply conductors. Consult a qualified electrician to ensure correct branch circuit conductor.

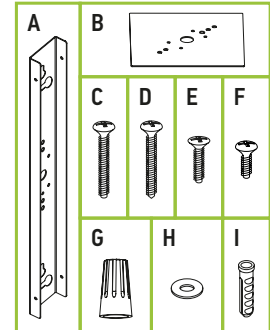
ASD® assumes no responsibility for claims arising out of improper or careless installation or handling of this product.

### DIMMING COMPATIBLE CONTROLS:

Brand	Lutron		Leviton
Models	MACL-153MLH-WH	DVCL-153PR	R02-DW6HD-2RW
	STCL-153PH-WH	P-PKG1W	R00-RNL06-0TW
	PD-6WCL-WH-R		R68-06674-POT
			DSL06

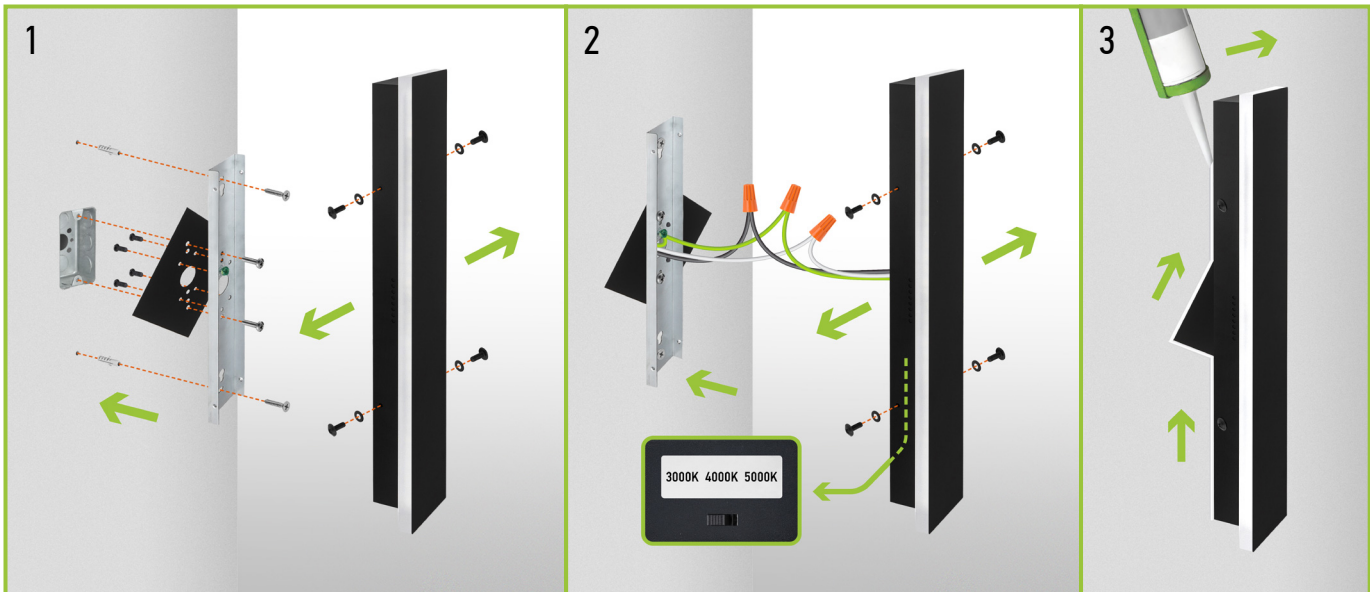
### PACKAGE CONTENTS:

Description	Quantity
LED Outdoor Back-Light Wall Sconce	1
Mounting plate (A)	1
Metal plate (B)	1
Mounting screw (C)	2
Self-tapping screw (D)	2
Metal plate screw (E)	4
Fixture screw (F)	4 (6 for 72')
Wire nut (G)	3
Waterproof gasket (H)	4 (6 for 72')
Anchor (I)	2
Box	1



### INSTALLATION STEPS:

1. Unscrew the fixture screws from both sides and remove the mounting plate. The fixture can be installed on standard 2.75" or 3.5" outlet box. Attach the mounting plate to the outlet box and mark the location of the holes, drill the holes for anchors, insert anchors into the holes, twist the two self-tapping screws. Cover the outlet box with the decorative plate, attach the mounting plate using mounting screws, and tighten self-tapping screws.
2. Connect the wires: Black to Black, White to White, Ground to Ground. Secure the connection with wire nuts. Tuck all the wires back inside the outlet box. Choose preferred color temperature by adjusting the switch position. Put the waterproof gasket on each fixture screw. Place the wall sconce on the mounting plate and secure it using fixture screws.
3. For outdoor locations please use silicone (not included) shown in the picture below.



For most up-to-date spec sheets please refer to [asd-lighting.com](http://asd-lighting.com)

ASD LIGHTING CORP

E-mail: [orders@asd-lighting.com](mailto:orders@asd-lighting.com) | Web site: [www.asd-lighting.com](http://www.asd-lighting.com)

