



# LED TRADITIONAL WALLPACK

► **DESIGN** - LED TRADITIONAL WALLPACK has a die-cast aluminum housing with excellent heat dissipation, tempered glass lens to protect the LED chips and provide high illuminance, and anti-leakage silicone gaskets. It is designed to operate on 120-277V circuits with a 0-10V dimmable driver.

► Removable hinge door for quick and easy installation and wiring. Depending on model you can choose either a 3,000K warm white, 4,000K cool white or 5,000K daylight color temperature. Models with built-in battery back-up provide 90 minutes of power in case of emergency.

► **SURGE PROTECTION** - 6kV protects the fixture from voltage spikes and current surges.

► **INSTALLATION** - The fixture can be mounted to a junction box or directly to a wall. Perfect commercial or industrial solution for outdoor security lighting, wall perimeter lighting, garages, large backyards, warehouses, hotels, and many other applications. It is also Wet Locations rated.

► **ADVANTAGES** - With calculated lifespan up to 145,000 hours, these fixtures are made to last decades under normal operation! ASD provides a 5-year limited warranty along with UL and DLC Premium certifications to guarantee top quality products and safety!

Catalog number	
Notes	
Type	



Model	Watts	Voltage	Dimmable	Lumens	CCT	Finish	Dimensions (LxWxH)	Option
<b>WLP01</b>								
ASD-WLP01S-50D50	50W	120-277 V	1-10 V	7,100 lm	5,000 K	Bronze	10-1/4" x 9-1/2" x 7-1/2"	-
ASD-WLP01-50D50	50W	120-277 V	0-10 V	7,600 lm	5,000 K	Bronze	14-1/4" x 9-5/16" x 7-9/16"	-
ASD-WLP01-80D50	80W	120-277 V	0-10 V	11,280 lm	5,000 K	Bronze	14-1/4" x 9-5/16" x 7-9/16"	-
ASD-WLP01-120D50	120W	120-277 V	0-10 V	16,920 lm	5,000 K	Bronze	14-1/4" x 9-5/16" x 7-9/16"	-
ASD-WLP01S-30DAC	30W	120-277 V	1-10 V	up to 4,890 lm	3CCT (3,000/4,000/5,000 K)	Bronze	10-1/4" x 9-1/2" x 7-1/2"	-
ASD-WLP01S-50DAC	50W	120-277 V	1-10 V	up to 7,500 lm	3CCT (3,000/4,000/5,000 K)	Bronze	10-1/4" x 9-1/2" x 7-1/2"	-
ASD-WLP01-50DAC	50W	120-277 V	1-10 V	up to 7,773 lm	3CCT (3,000/4,000/5,000 K)	Bronze	14-1/4" x 9-5/16" x 7-9/16"	-
ASD-WLP01-80DAC	80W	120-277 V	1-10 V	up to 12,174 lm	3CCT (3,000/4,000/5,000 K)	Bronze	14-1/4" x 9-5/16" x 7-9/16"	-
ASD-WLP01-120DAC	120W	120-277 V	1-10 V	up to 17,703 lm	3CCT (3,000/4,000/5,000 K)	Bronze	14-1/4" x 9-5/16" x 7-9/16"	-
<b>WLP01-EM WITH BATTERY BACK-UP</b>								
ASD-WLP01-50DAC-EM	50W	120-277 V	1-10 V	up to 7,773 lm	3CCT (3,000/4,000/5,000 K)	Bronze	14-1/4" x 9-5/16" x 7-9/16"	8W Battery back-up
ASD-WLP01-80DAC-EM	80W	120-277 V	1-10 V	up to 12,174 lm	3CCT (3,000/4,000/5,000 K)	Bronze	14-1/4" x 9-5/16" x 7-9/16"	15W Battery back-up
<b>WLP01-PC WITH PHOTOCCELL</b>								
ASD-WLP01-50D50-PC	50W	120-277 V	0-10 V	7,692 lm	5,000 K	Bronze	14" x 9" x 7-1/8"	Photocell
ASD-WLP01-80D50-PC	80W	120-277 V	0-10 V	11,973 lm	5,000 K	Bronze	14" x 9" x 7-1/8"	Photocell
ASD-WLP01-50A-PC	30/40/50W	120-277 V	0-10 V	up to 7,889 lm	3CCT (3,000/4,000/5,000 K)	Bronze	14" x 9" x 7-1/8"	Photocell
ASD-WLP01-80A-PC	50/60/80W	120-277 V	0-10 V	up to 12,423 lm	3CCT (3,000/4,000/5,000 K)	Bronze	14" x 9" x 7-1/8"	Photocell
ASD-WLP01-120A-PC	80/100/120W	120-277 V	1-10 V	up to 18,248 lm	3CCT (3,000/4,000/5,000 K)	Bronze	14" x 9" x 7-1/8"	Photocell

For detailed luminous flux information please refer to Annex 1, page 5.

For most up-to-date spec sheets please refer to [asd-lighting.com](http://asd-lighting.com)



# LED TRADITIONAL WALLPACK

## PRODUCT SPECIFICATIONS:

Construction & Materials						
Housing	Aluminum					
Lens	Glass					
Finish	Bronze					
Weight	ASD-WLP01S-50D50	5.3 lbs (2.4 kg)	ASD-WLP01-50DAC	8 lbs (3.7 kg)	ASD-WLP01-50D50-PC	7.2 lbs (3.3 kg)
	ASD-WLP01-50D50	7.9 lbs (3.6 kg)	ASD-WLP01-80DAC	8.3 lbs (3.8 kg)	ASD-WLP01-80D50-PC	
	ASD-WLP01-80D50	8.2 lbs (3.7 kg)	ASD-WLP01-120DAC	9.4 lbs (4.3 kg)	ASD-WLP01-50A-PC	
	ASD-WLP01-120D50	9.3 lbs (4.2 kg)	ASD-WLP01-50DAC-EM	9.1 lbs (4.2 kg)	ASD-WLP01-80A-PC	7.4 lbs (3.4 kg)
	ASD-WLP01S-30DAC	5.3 lbs (2.4 kg)	ASD-WLP01-80DAC-EM	9.4 lbs (4.3 kg)	ASD-WLP01-120A-PC	
	ASD-WLP01S-50DAC	5.5 lbs (2.5 kg)				
Environmental system						
Work environment	Suitable for Wet Locations, IP65					
Operating temperature	-40°F to 122°F (-40°C to 50°C)					
L-70 Life	R > 72,000 hrs; C > 145,000 hrs		for PC models: R > 102,000 hrs; C > 167,000 hrs			
Optical system						
Color temperature	5,000 K 3CCT switch (3,000/4,000/5,000 K), 5,000 K by default					
CRI	> 70		for PC models: > 80			
Electrical system						
Input voltage	120-277 V					
Max input current	ASD-WLP01S-50D50	0.55 A	ASD-WLP01-50DAC	0.55 A	ASD-WLP01-50D50-PC	0.42 A
	ASD-WLP01-50D50		ASD-WLP01-80DAC	0.8 A	ASD-WLP01-80D50-PC	0.67 A
	ASD-WLP01-80D50	0.8 A	ASD-WLP01-120DAC	1.2 A	ASD-WLP01-50A-PC	0.42 A
	ASD-WLP01-120D50	1.05 A	ASD-WLP01-50DAC-EM	0.55 A	ASD-WLP01-80A-PC	0.67 A
	ASD-WLP01S-30DAC	0.33 A	ASD-WLP01-80DAC-EM	0.8 A	ASD-WLP01-120A-PC	1 A
	ASD-WLP01S-50DAC	0.55 A				
Inrush current (Action time)	80 A (0.75 S)		for PC models: 80 A (0.15 S)			
Off state power	0W					
Power consumption	ASD-WLP01S-50D50	50W	ASD-WLP01-50DAC	50W	ASD-WLP01-50D50-PC	50W
	ASD-WLP01-50D50		ASD-WLP01-80DAC	80W	ASD-WLP01-80D50-PC	80W
	ASD-WLP01-80D50	80W	ASD-WLP01-120DAC	120W	ASD-WLP01-50A-PC	30/40/50W
	ASD-WLP01-120D50	120W	ASD-WLP01-50DAC-EM	50W	ASD-WLP01-80A-PC	50/60/80W
	ASD-WLP01S-30DAC	30W	ASD-WLP01-80DAC-EM	80W	ASD-WLP01-120A-PC	80/100/120W
	ASD-WLP01S-50DAC	50W				
Power factor	> 0.9					
Output voltage	ASD-WLP01S-50D50	110-130 V	ASD-WLP01-50DAC	110-130 V	ASD-WLP01-50D50-PC	180-260 V
	ASD-WLP01-50D50		ASD-WLP01-80DAC		ASD-WLP01-80D50-PC	
	ASD-WLP01-80D50	ASD-WLP01-120DAC	ASD-WLP01-50A-PC			
	ASD-WLP01-120D50	ASD-WLP01-50DAC-EM	ASD-WLP01-80A-PC			
	ASD-WLP01S-30DAC	110-130 V	ASD-WLP01-80DAC-EM	105-125 V	ASD-WLP01-120A-PC	
	ASD-WLP01S-50DAC					
Max output current	ASD-WLP01S-50D50	0.39 A	ASD-WLP01-50DAC	0.39 A	ASD-WLP01-50D50-PC	0.2 A
	ASD-WLP01-50D50		ASD-WLP01-80DAC	0.62 A	ASD-WLP01-80D50-PC	0.33 A
	ASD-WLP01-80D50	0.62 A	ASD-WLP01-120DAC	0.92 A	ASD-WLP01-50A-PC	0.2 A
	ASD-WLP01-120D50	0.92 A	ASD-WLP01-50DAC-EM	0.39 A	ASD-WLP01-80A-PC	0.33 A
	ASD-WLP01S-30DAC	0.23 A	ASD-WLP01-80DAC-EM	0.62 A	ASD-WLP01-120A-PC	0.5 A
	ASD-WLP01S-50DAC	0.39 A				
Surge protection	4 kV		for PC models: 4 kV / 6 kV		for 120W model: 6 kV / 6 kV	
Dimming compatible controls						
Brand	Maxxima	Keygma	Lutron	Leviton	Eaton	
Models	MEW-DM600LV	KGM-1A010V	DVSTV-WH	IP710-DLZ	DF10P-C1	
Dimming compatible controls for WLP01-PC						
Brand	Leviton		Lutron			
Models	IP710-LFZ		DVSTV-453P			
Regular and voluntary certifications						
5-year limited warranty						
DesignLights Consortium (DLC) listed (Classification: Premium) Main: Outdoor luminaires; General application: Mid/High output; Primary use: Outdoor non-cutoff and semi-cutoff wall-mounted area luminaires						
UL certified E473804						

## PACKAGE CONTENTS:

Description	Q-ty
LED Traditional Wallpack	1
Box	1

For most up-to-date spec sheets please refer to [asd-lighting.com](http://asd-lighting.com)



# LED TRADITIONAL WALLPACK

## BUILT-IN BATTERY BACK-UP INFORMATION

Specifications	ASD-WLP01-50DAC-EM	ASD-WLP01-80DAC-EM
Input voltage	100-277 V 50/60 Hz	
Battery capacity	2,500mA * 4	3,000mA * 6
Max emergency output power	8W	15W
EM lumens	1,246 lm	2,301 lm
Emergency current	70 mA	125 mA
Emergency operation time	≥ 90 minutes	
Battery voltage	7.4 V	11.1 V
Battery type	Li-ion	
Battery charging current	250 mA	
Charging time	≥ 24 hours	
Indicator light	Illuminated test switch, indicator light	
Full charge/discharge cycles	500 cycles	



### STANDARD OPERATION DISPLAY STATUS:

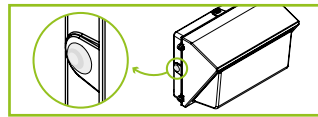
#### Indicator light modes:

Green light ON - The battery back-up is charging in standby mode;  
 Green light OFF - AC power is out, the battery back-up is working in emergency mode.

#### Test button operation:

Press the test button to switch the system to back-up mode. The green light will turn off, and the fixture will decrease in light amount. Release test button to go back to the normal mode.

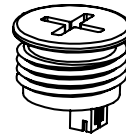
Charging	
Emergency mode	



### ACCESSORIES (sold separately):

#### Photocell

ASD-PC-WLP



### ACCESSORY COMPATIBILITY LIST:

Accessories	Photocell ASD-PC-WLP
Models	
ASD-WLP01	•
ASD-WLP01-EM	•
ASD-WLP01-PC	

## BUILT-IN PHOTOCELL INFORMATION

#### Specifications

Light level to turn ON	≤ 80 lux (7.4 fc)
Light level to turn OFF	≥ 150 lux (13.9 fc)
Operating temperature	-4°F to 140°F (-20°C to 60°C)

The dusk-to-dawn sensor automatically turns the fixture off during daylight hours.

## PHOTOCELL INFORMATION

### ASD-PC-WLP sold separately:

- The light is always ON when luminance is < 30 lux (2.8 fc) (night time)
- The light is always OFF when luminance is > 60 lux (5.6 fc) (day time)

The dusk-to-dawn sensor automatically turns the fixture off during daylight hours.

For most up-to-date spec sheets please refer to [asd-lighting.com](http://asd-lighting.com)



# LED TRADITIONAL WALLPACK

## INSTALLATION GUIDE

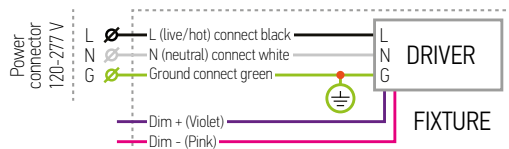
### IMPORTANT SAFETY INFORMATION:

Please read all the instructions below before installation.

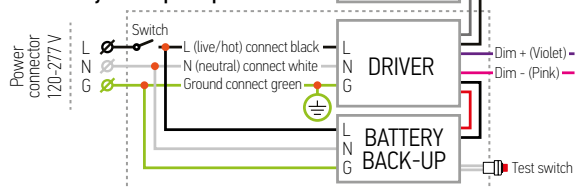
- ▶ Make sure that the supply voltage corresponds to the rated product voltage.
- ▶ The product must be installed by a qualified electrician in accordance with the National Electrical Code and corresponding local codes.
- ▶ If the product is damaged, do not use it.

### ELECTRICAL SCHEMATIC DIAGRAM:

#### WLP01



#### WLP01-EM with battery back-up and photocell



### ⚠ WARNING

**RISK OF PERSONAL INJURY – READ and follow all WARNINGS and installation instructions.** Keep or give to the owner for future reference.

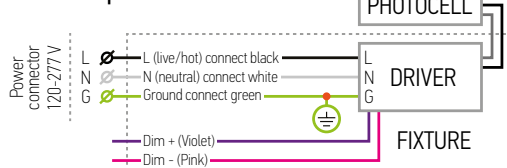
**Risk of cuts:** Wear gloves to prevent cuts or abrasions when removing from carton, handling, installing, and maintaining this product.

**Risk of electric shock:** This product must be installed in accordance with the applicable installation code by a person familiar with the construction and operation of the product and the hazards involved.

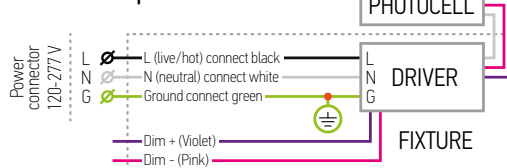
**Risk of Fire:** Minimum 194°F supply conductors. Consult a qualified electrician to ensure correct branch circuit conductor.

ASD® assumes no responsibility for claims arising out of improper or careless installation or handling of this product.

#### WLP01 with photocell



#### WLP01-PC with photocell



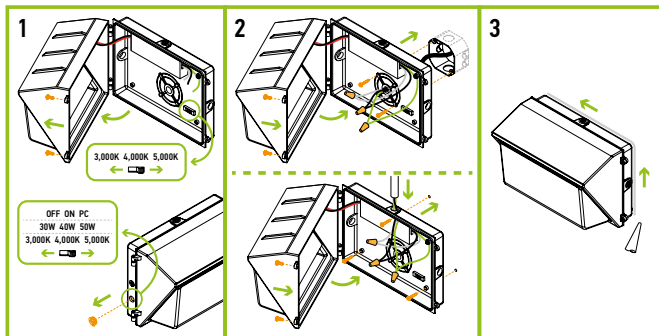
### INSTALLATION STEPS:

1. Use a screwdriver to loosen the screws securing the front cover and open the fixture. Remove the knockout on the side of the fixture. Choose needed color temperature and power, and toggle the photocell on/off by adjusting the switch (for models with installed photocell).

2. **Junction box installation:** Drill the mounting holes and secure the fixture on the mounting surface, insert the power cord. Connect the wires: Black to Black, White to White, Green to Green (Purple to Purple, Pink to Pink if dimming is needed). Close the front cover and tighten the screws.

**Wall installation:** Secure the fixture on the wall and remove one of the caps, insert the power cord. Connect the wires: Black to Black, White to White, Green to Green (Purple to Purple, Pink to Pink if dimming is needed). Close the front cover and tighten the screws.

3. For outdoor locations it is recommended to use silicone (not included).

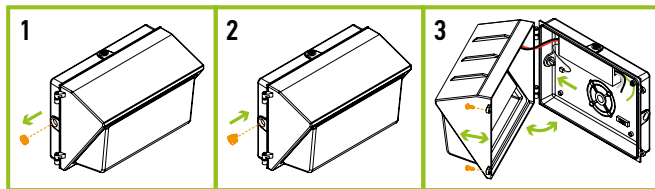


\* Power and OFF ON Photocell options vary by model.

### PHOTOCELL INSTALLATION ASD-PC-WLP

#### sold separately:

1. Remove the knockout on the side of the fixture.
2. Screw in the Photocell to the knockout hole.
3. Unscrew two screws on the side of the fixture, open the fixture, insert connector on black-grey wire to the photocell. Close the fixture and tighten two screws back.



\* Only for models without installed photocell.

For most up-to-date spec sheets please refer to [asd-lighting.com](http://asd-lighting.com)



# LED TRADITIONAL WALLPACK

## ORDERING INFORMATION

Model	Pcs. per carton	Carton size	Carton weight	UPC
<b>WLP01</b>				
ASD-WLP01S-50D50	1	11.7" x 12.3" x 9.5"	6.8 lbs	810050736220
ASD-WLP01-50D50	1	16.5" x 10.8" x 9.4"	9.9 lbs	810050735742
ASD-WLP01-80D50	1	16.5" x 10.8" x 9.4"	10.1 lbs	810050735759
ASD-WLP01-120D50	1	16.5" x 10.8" x 9.4"	11.2 lbs	810050735766
ASD-WLP01S-30DAC	1	11.7" x 12.3" x 9.5"	6.8 lbs	810050735803
ASD-WLP01S-50DAC	1	11.7" x 12.3" x 9.5"	7.1 lbs	810050736985
ASD-WLP01-50DAC	1	16.5" x 10.8" x 9.4"	10 lbs	810050735810
ASD-WLP01-80DAC	1	16.5" x 10.8" x 9.4"	10.3 lbs	810050735827
ASD-WLP01-120DAC	1	16.5" x 10.8" x 9.4"	11.4 lbs	810050735834
<b>WLP01-EM WITH BATTERY BACK-UP</b>				
ASD-WLP01-50DAC-EM	1	16.5" x 10.8" x 9.4"	11.1 lbs	810050735780
ASD-WLP01-80DAC-EM	1	16.5" x 10.8" x 9.4"	11.4 lbs	810050735797
<b>WLP01-PC WITH PHOTOCELL</b>				
ASD-WLP01-50D50-PC	1	14.6" x 10" x 8.3"	8.5 lbs	810128115605
ASD-WLP01-80D50-PC	1	14.6" x 10" x 8.3"	8.5 lbs	810128115773
ASD-WLP01-50A-PC	1	14.6" x 10" x 8.3"	8.5 lbs	810128115575
ASD-WLP01-80A-PC	1	14.6" x 10" x 8.3"	8.5 lbs	810128115582
ASD-WLP01-120A-PC	1	14.6" x 10" x 8.3"	8.7 lbs	810128115599

### ACCESSORIES:

Model	Description	UPC	Pcs. per carton	Carton size	Carton weight	GTIN 14
ASD-PC-WLP	Photocell	810050735773	100	5.1" x 4.1" x 10.2"	1.1 lbs	30810050735774

## ANNEX 1

Model	Watts	3,000 K	4,000 K	5,000 K
ASD-WLP01S-50D50	50W	-	-	7,100 lm
ASD-WLP01-50D50	50W	-	-	7,600 lm
ASD-WLP01-80D50	80W	-	-	11,280 lm
ASD-WLP01-120D50	120W	-	-	16,920 lm
ASD-WLP01S-30DAC	30W	4,500 lm	4,890 lm	4,834 lm
ASD-WLP01S-50DAC	50W	7,500 lm	7,230 lm	7,282 lm
ASD-WLP01-50DAC	50W	7,250 lm	7,719 lm	7,773 lm
ASD-WLP01-50DAC-EM	50W	7,250 lm	7,719 lm	7,773 lm
ASD-WLP01-80DAC	80W	11,680 lm	12,174 lm	11,956 lm
ASD-WLP01-80DAC-EM	80W	11,680 lm	12,174 lm	11,956 lm
ASD-WLP01-120DAC	120W	17,050 lm	17,703 lm	17,633 lm
ASD-WLP01-50D50-PC	50W	-	-	7,692 lm
ASD-WLP01-80D50-PC	80W	-	-	11,973 lm
ASD-WLP01-50A-PC	30W	4,690 lm	4,884 lm	5,007 lm
	40W	6,169 lm	6,483 lm	6,546 lm
	50W	7,452 lm	7,882 lm	7,889 lm
ASD-WLP01-80A-PC	50W	7,621 lm	8,019 lm	8,146 lm
	60W	8,990 lm	9,521 lm	9,539 lm
	80W	11,514 lm	12,423 lm	12,213 lm
ASD-WLP01-120A-PC	80W	12,681 lm	13,325 lm	13,177 lm
	100W	15,576 lm	16,420 lm	16,054 lm
	120W	17,113 lm	17,571 lm	18,248 lm

For most up-to-date spec sheets please refer to [asd-lighting.com](http://asd-lighting.com)