



# LED STEP LIGHT WITH RGBW

► **DESIGN** - LED STEP LIGHT WITH RGBW has a sleek, low-profile design with no visible hardware, allowing it to seamlessly blend into any setting. It is designed to operate on 120V circuits. HUB for group control via Wi-Fi is included, you can control up to 128 fixtures as a single group.

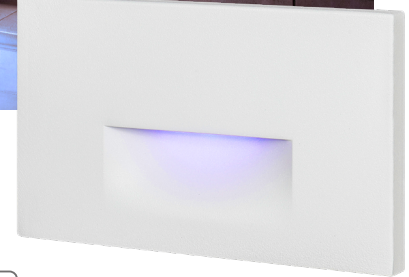
► **RGBW** - The fixture has RGBW design with APP control. You can easily select Red, Green, Blue, White (2,700K-6,500K) colors or its' combinations, having 16.7 million colors in total. You can also choose lighting patterns and set up a schedule, having a great variety of good looking effects. All of it is easily controlled by Smart APP on your Smartphone. The fixture is also compatible with Alexa and Google Assistant.

► **DURABLE WATERPROOF HOUSING** - Resistant to rust and can be used indoors and outdoors for all weather conditions.

► **INSTALLATION** - This fixture is rated for Wet Locations, making it perfect for indoor and outdoor projects such as stairways, pathways, corridors, walkways, building perimeters.

► **ADVANTAGES** - With calculated lifespan up to 50,000 hours, these fixtures are made to last decades under normal operation! ASD provides a 5-year limited warranty along with ETL certifications to guarantee top quality products and safety!

Catalog number	
Notes	
Type	



Finish:  White  Black

Model	Watts	Voltage	Dimmable	Lumens	CCT	Finish	Dimensions (LxWxH)
ASD-STLA-3SM-RGBW-WH-6P	3W	120 V	SMART APP	up to 58 lm	Red-Green-Blue-2,700K-6,500 K	White	4-3/4" x 2-13/16" x 1-9/16"
ASD-STLA-3SM-RGBW-BK-6P	3W	120 V	SMART APP	up to 58 lm	Red-Green-Blue-2,700K-6,500 K	Black	4-3/4" x 2-13/16" x 1-9/16"

For detailed luminous flux information please refer to Annex 1, page 2.

## ANNEX 1

Model	Watts	2,700 K	3,000 K	4,000 K	5,000 K	6,500 K
ASD-STLA-3SM-RGBW-WH-6P	3W	54 lm	55 lm	56 lm	57 lm	58 lm
ASD-STLA-3SM-RGBW-BK-6P						

## ORDERING INFORMATION

Model	UPC	Pcs. (pack) per carton	Carton size	Carton weight	GTIN 14
ASD-STLA-3SM-RGBW-WH-6P	810128114615	24 (6)	10.6" x 7.7" x 15.6"	11 lbs	10810128114612
ASD-STLA-3SM-RGBW-BK-6P	810128114608	24 (6)	10.6" x 7.7" x 15.6"	11 lbs	10810128114605

For most up-to-date spec sheets please refer to [asd-lighting.com](http://asd-lighting.com)



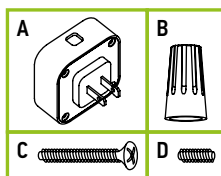
# LED STEP LIGHT WITH RGBW

## PRODUCT SPECIFICATIONS:

Construction & Materials	
Housing	Steel
Lens	Acrylic
Finish	White, Black
Weight	2.1 lbs (0.9 kg)
Environmental system	
Work environment	Suitable for Wet Locations
Operating temperature	-40°F to 113°F (-40°C to 45°C)
L-70 Life	> 50,000 hrs
Optical system	
Color temperature	from Red-Green-Blue-2,700K-6,500 K with smart app
CRI	> 80
Electrical system	
Input voltage	120 V
Max input current	0.042 A
Inrush current (Action time)	0.25 A (0.4 S)
Off state power	0W
Power consumption	3W
Power factor	> 0.9
Output voltage	12 V
Max output current	1.36 A
Surge protection DM/CM	2.5 kV / 1.25 kV
Regular and voluntary certifications	
5-year limited warranty	
cETLus certified 4001256	

## PACKAGE CONTENTS:

Description	Quantity
LED Step Light with RGBW	6
Smart hup (A)	1
Wire nut (B)	3
Screw (C)	2
Hexagon screw (D)	1
Box	1



## INSTALLATION GUIDE

### IMPORTANT SAFETY INFORMATION:

Please read all the instructions below before installation.

- ▶ Make sure that the supply voltage corresponds to the rated product voltage.
- ▶ The product must be installed by a qualified electrician in accordance with the National Electrical Code and corresponding local codes.
- ▶ If the product is damaged, do not use it.

### ⚠ WARNING

**Risk of personal injury – read and follow all warnings and installation instructions.** Keep or give to the owner for future reference.

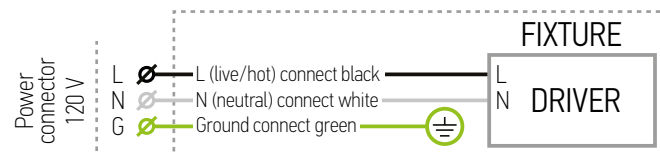
**Risk of cuts:** Wear gloves to prevent cuts or abrasions when removing from carton, handling, installing, and maintaining this product.

**Risk of electric shock:** This product must be installed in accordance with the applicable installation code by a person familiar with the construction and operation of the product and the hazards involved.

**Risk of Fire:** Minimum 194°F supply conductors. Consult a qualified electrician to ensure correct branch circuit conductor.

ASD® assumes no responsibility for claims arising out of improper or careless installation or handling of this product.

## ELECTRICAL SCHEMATIC DIAGRAM:



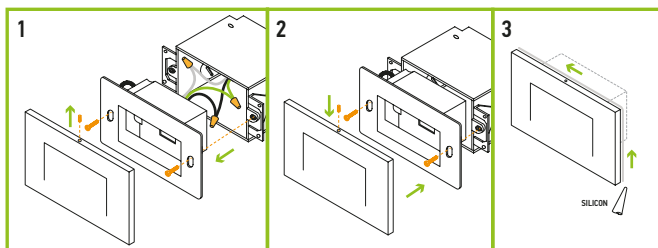
For most up-to-date spec sheets please refer to [asd-lighting.com](http://asd-lighting.com)



# LED STEP LIGHT WITH RGBW

## INSTALLATION STEPS:

1. Use a screwdriver to loosen the screws securing the front cover and to disassemble the face plate. Pull the supply wires out from the outlet box. Connect the wires: Black to Black, White to White, Green to Green. Secure the connection with wire nuts. Tuck all the wires back inside the outlet box.
2. Attach the mounting bracket to the outlet box using screws. Place the faceplate on the mounting bracket and secure with the hexagon screw.
3. For outdoor locations please use silicone (not included) as shown in the picture below.



[ASD SMART app download Android](#)



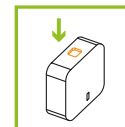
[ASD SMART app download iOS](#)



## STEP-BY-STEP GUIDE FOR ADDING SMART LIGHTS TO THE ASD SMART APP:

1. **Preparation:** Gather your STLA fixtures and the hub that comes with them.
2. **Install the ASD Smart app:** Download the ASD Smart app from your app store and install it on your phone or tablet.
3. **Connect the hub:** Plug the hub into a power outlet.
  - If the hub's light is blinking, it's already in pairing mode. Skip to Step 5.
  - If the light isn't blinking, go to Step 4 to manually put it in pairing mode.

4. **Put the hub in pairing mode:** Locate the button on the hub. Press and hold the button for 5 seconds until the red LED starts blinking. This indicates the hub is in pairing mode and ready to connect to the app.



5. **Adding the hub to the app:**

- Ensure Bluetooth is enabled and your phone is connected to Wi-Fi with the Internet.
- Open the ASD Smart App.
- At the top of the App select the area where hub will be located.
- Press the "+" button in the top right corner and then the "Add Device" button to add the hub.
- Wait for the app to find the hub. When it appears, press the "Add" button.
- Enter your Wi-Fi credentials.
- After the hub loads, press "Done" to complete the setup.

6. **Putting the fixtures in pairing mode:** Now that the hub is added, you can pair your STLA fixtures. To do this, turn the fixture on and off 5 times. The fixture will start blinking, signaling it's in pairing mode. The blinking will stop after a few seconds, but it will still be in pairing mode.

7. **Adding STLA fixtures to the app:** In the app, return to the "Add Device" section. Select your hub from the list of devices and follow the steps below to add your fixtures.

- Press the "Add Device" button at the bottom and then the "Search for Devices" button to find STLA fixtures.
- Wait for the app to find your STLA fixtures. When it appears, press "Next" button.
- After the fixture loads, press "Done" to complete the setup.
- Completing the setup:

With all your fixtures added, you can now control them through the ASD Smart app. Your STLA fixtures are now ready for use!

**Note:** While the hub is required for adding STLA fixtures, it's not necessary for ongoing control. You may need to log back into the app if you're using the system without the hub.

For most up-to-date spec sheets please refer to [asd-lighting.com](http://asd-lighting.com)