



LED UNDER CABINET BULLNOSE

► **DESIGN** - LED UNDER CABINET BULLNOSE with ON/OFF switch is a perfect solution for hidden backlight. The acrylic lens with a 110° beam angle and CRI90+ grants you even light distribution. It is designed to operate on 120V circuits.

► **COLOR SELECTABLE** - You can choose either a 2,700K soft white, 3,000K warm white, 3,500K neutral white, 4,000K cool white, or 5,000K daylight color temperature.

► **DIMMING** - Smooth triac dimming capabilities ranging from 10% to 100% with modern LED dimmers allow you to control the look and feel of your space.

► **INSTALLATION** - Quick and easy hardwired installation. It is also Damp Locations rated.

► **ADVANTAGES** - With a lifespan of 50,000 hours, these fixtures are made to last decades under normal operation! ASD provides a 5-year limited warranty along with UL certification to guarantee top quality products and safety!

<i>Catalog number</i>	
<i>Notes</i>	
<i>Type</i>	



Finish: White Bronze

Model	Size	Watts	Voltage	Dimmable	Lumens	CCT	Finish	Dimensions (LxWxH)	Cord
ASD-UBN-9WH	9 inch	4W	120 V	TRIAC	up to 337 lm	5CCT (2,700/3,000/3,500/4,000/5,000 K)	White	9" x 3-1/2" x 1-1/8"	1.5 ft
ASD-UBN-12WH	12 inch	5W	120 V	TRIAC	up to 442 lm	5CCT (2,700/3,000/3,500/4,000/5,000 K)	White	12" x 3-1/2" x 1-1/8"	1.5 ft
ASD-UBN-12WH-2P	12 inch	5W	120 V	TRIAC	up to 442 lm	5CCT (2,700/3,000/3,500/4,000/5,000 K)	White	12" x 3-1/2" x 1-1/8"	1.5 ft
ASD-UBN-12BR	12 inch	5W	120 V	TRIAC	up to 442 lm	5CCT (2,700/3,000/3,500/4,000/5,000 K)	Bronze	12" x 3-1/2" x 1-1/8"	1.5 ft
ASD-UBN-18WH	18 inch	10W	120 V	TRIAC	up to 807 lm	5CCT (2,700/3,000/3,500/4,000/5,000 K)	White	18" x 3-1/2" x 1-1/8"	1.5 ft
ASD-UBN-18WH-2P	18 inch	10W	120 V	TRIAC	up to 807 lm	5CCT (2,700/3,000/3,500/4,000/5,000 K)	White	18" x 3-1/2" x 1-1/8"	1.5 ft
ASD-UBN-18BR	18 inch	10W	120 V	TRIAC	up to 807 lm	5CCT (2,700/3,000/3,500/4,000/5,000 K)	Bronze	18" x 3-1/2" x 1-1/8"	1.5 ft
ASD-UBN-24WH	24 inch	12W	120 V	TRIAC	up to 1,051 lm	5CCT (2,700/3,000/3,500/4,000/5,000 K)	White	24" x 3-1/2" x 1-1/8"	1.5 ft
ASD-UBN-24WH-2P	24 inch	12W	120 V	TRIAC	up to 1,051 lm	5CCT (2,700/3,000/3,500/4,000/5,000 K)	White	24" x 3-1/2" x 1-1/8"	1.5 ft
ASD-UBN-24BR	24 inch	12W	120 V	TRIAC	up to 1,051 lm	5CCT (2,700/3,000/3,500/4,000/5,000 K)	Bronze	24" x 3-1/2" x 1-1/8"	1.5 ft
ASD-UBN-32WH	32 inch	16W	120 V	TRIAC	up to 1,436 lm	5CCT (2,700/3,000/3,500/4,000/5,000 K)	White	32-1/4" x 3-1/2" x 1-1/8"	1.5 ft
ASD-UBN-40WH	40 inch	20W	120 V	TRIAC	up to 1,814 lm	5CCT (2,700/3,000/3,500/4,000/5,000 K)	White	40" x 3-1/2" x 1-1/8"	1.5 ft
ASD-UBN-48WH	48 inch	24W	120 V	TRIAC	up to 2,087 lm	5CCT (2,700/3,000/3,500/4,000/5,000 K)	White	48-1/16" x 3-1/2" x 1-1/8"	1.5 ft

For detailed luminous flux information please refer to Annex 1.

ANNEX 1

Model	Watts	2,700 K	3,000 K	3,500 K	4,000 K	5,000 K
ASD-UBN-9WH	4W	280 lm	303 lm	328 lm	337 lm	337 lm
ASD-UBN-12WH ASD-UBN-12WH-2P ASD-UBN-12BR	5W	382 lm	401 lm	431 lm	442 lm	442 lm
ASD-UBN-18WH ASD-UBN-18WH-2P ASD-UBN-18BR	10W	674 lm	737 lm	791 lm	807 lm	777 lm
ASD-UBN-24WH ASD-UBN-24WH-2P ASD-UBN-24BR	12W	880 lm	969 lm	1,026 lm	1,051 lm	1,023 lm
ASD-UBN-32WH	16W	1,206 lm	1,299 lm	1,390 lm	1,436 lm	1,400 lm
ASD-UBN-40WH	20W	1,541 lm	1,623 lm	1,752 lm	1,814 lm	1,789 lm
ASD-UBN-48WH	24W	1,755 lm	1,856 lm	2,023 lm	2,087 lm	2,029 lm

For most up-to-date spec sheets please refer to asd-lighting.com



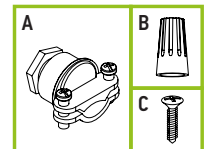
LED UNDER CABINET BULLNOSE

PRODUCT SPECIFICATIONS:

Construction & Materials						
Housing	Steel					
Lens	PC					
Finish	White, Bronze					
Weight	ASD-UBN-9WH	0.8 lbs (0.4 kg)	ASD-UBN-18WH	1.3 lbs (0.6 kg)	ASD-UBN-24WH-2P	3.1 lbs (1.4 kg)
	ASD-UBN-12WH	1 lbs (0.5 kg)	ASD-UBN-18WH-2P	2.6 lbs (1.2 kg)	ASD-UBN-24BR	1.6 lbs (0.7 kg)
	ASD-UBN-12WH-2P	2 lbs (0.9 kg)	ASD-UBN-18BR	1.3 lbs (0.6 kg)	ASD-UBN-32WH	2.4 lbs (1.1 kg)
	ASD-UBN-12BR	1 lbs (0.5 kg)	ASD-UBN-24WH	1.6 lbs (0.7 kg)	ASD-UBN-40WH	3.1 lbs (1.4 kg)
				ASD-UBN-48WH	3.8 lbs (1.7 kg)	
Environmental system						
Work environment	Suitable for Damp Locations					
Operating temperature	-4°F to 113°F (-20°C to 45°C)					
L-70 Life	> 50,000 hrs					
Optical system						
Color temperature	5CCT switch (2,700/3,000/3,500/4,000/5,000 K), 3,000 K by default					
CRI	> 90					
Electrical system						
Input voltage	120 V					
Max input current	ASD-UBN-9WH	0.06 A	ASD-UBN-18WH	0.1 A	ASD-UBN-24WH-2P	0.13 A
	ASD-UBN-12WH		ASD-UBN-18WH-2P		ASD-UBN-24BR	
	ASD-UBN-12WH-2P		ASD-UBN-18BR		ASD-UBN-32WH	
	ASD-UBN-12BR		ASD-UBN-24WH		ASD-UBN-40WH	
				ASD-UBN-48WH	0.23 A	
Inrush current (Action time)	50 A (0.5 S)					
Off state power	0W					
Power consumption	ASD-UBN-9WH	4W	ASD-UBN-18WH	10W	ASD-UBN-24WH-2P	12W
	ASD-UBN-12WH	5W	ASD-UBN-18WH-2P		ASD-UBN-24BR	
	ASD-UBN-12WH-2P		ASD-UBN-18BR	ASD-UBN-32WH	16W	
	ASD-UBN-12BR		ASD-UBN-24WH	ASD-UBN-40WH	20W	
				ASD-UBN-48WH	24W	
Power factor	> 0.9					
Output voltage	35-45 V					
Max output current	ASD-UBN-9WH	0.75 A	ASD-UBN-18WH	1.9 A	ASD-UBN-24WH-2P	2.5 A
	ASD-UBN-12WH	0.95 A	ASD-UBN-18WH-2P		ASD-UBN-24BR	
	ASD-UBN-12WH-2P		ASD-UBN-18BR	ASD-UBN-32WH	3.4 A	
	ASD-UBN-12BR		ASD-UBN-24WH	ASD-UBN-40WH	4.2 A	
				ASD-UBN-48WH	5 A	
Surge protection DM/CM	2.5 kV / 2.5 kV					
Dimming range						
10-100%						
Dimming compatible controls						
Brand	Lutron					
Models	SELV-300P-WH-CSA	PD-5NE-WH-C	TGCL-153P			
	AYCL-253P-WH	RRD-PRO-WH				
Regular and voluntary certifications						
5-year limited warranty						
UL certified E473804						

PACKAGE CONTENTS:

Description	Quantity
LED Under Cabinet Bullnose	1 (2 for 2P)
Romex connection (A)	1
Wire nut (B)	3
Screw (C)	2
Box	1



For most up-to-date spec sheets please refer to asd-lighting.com



LED UNDER CABINET BULLNOSE

INSTALLATION GUIDE

IMPORTANT SAFETY INFORMATION:

Please read all the instructions below before installation.

- ▶ Make sure that the supply voltage corresponds to the rated product voltage.
- ▶ The product must be installed by a qualified electrician in accordance with the National Electrical Code and corresponding local codes.
- ▶ If the product is damaged, do not use it.

⚠ WARNING

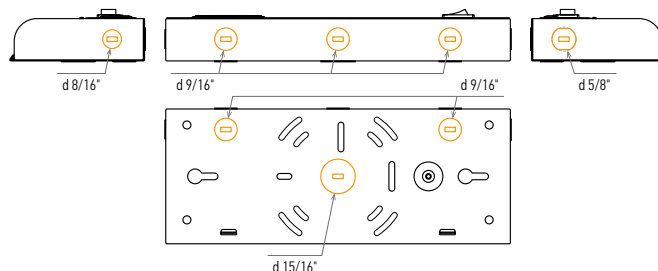
Risk of personal injury – read and follow all warnings and installation instructions. Keep or give to the owner for future reference.

Risk of cuts: Wear gloves to prevent cuts or abrasions when removing from carton, handling, installing, and maintaining this product.

Risk of electric shock: This product must be installed in accordance with the applicable installation code by a person familiar with the construction and operation of the product and the hazards involved.

Risk of Fire: Minimum 194°F supply conductors. Consult a qualified electrician to ensure correct branch circuit conductor.

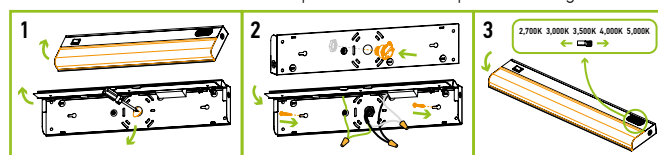
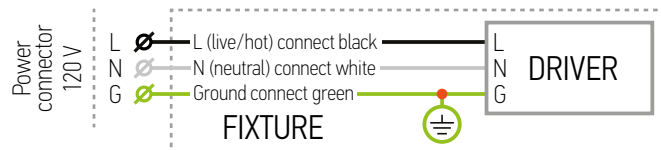
ASD® assumes no responsibility for claims arising out of improper or careless Installation or handling of this product.



HARDWIRE INSTALLATION:

1. Carefully remove the diffuser by gently squeezing it and holding the back side of the fixture. Open the wireway cover by pressing inward to release the cover from the two tabs. Dismount the back plate. Remove the knock-out.
2. Insert the romex connector into the open hole. Pass the wires through the romex connector. Connect the wires inside the fixture: Black to Black, White to White, Green to Green. Secure the connection with wire nuts. Attach the back plate to the surface using two screws. Reattach the front plate and fix it to the two tabs.
3. Reattach the diffuser. Choose the preferred color temperature using the switch.

ELECTRICAL SCHEMATIC DIAGRAM:



ORDERING INFORMATION

Model	UPC	Pcs. (pack) per carton	Carton size	Carton weight	GTIN 14
ASD-UBN-9WH	810128115438	20	16.1" x 10.2" x 8.5"	20.3 lbs	10810128115435
ASD-UBN-12WH	810128115346	20	16.1" x 13.2" x 8.5"	24.7 lbs	10810128115343
ASD-UBN-12WH-2P	810128115353	20 (2)	20.2" x 13.2" x 6.5"	22.5 lbs	10810128115350
ASD-UBN-12BR	810128117791	20	16.1" x 13.2" x 8.5"	24.7 lbs	10810128117798
ASD-UBN-18WH	810128115360	20	19.2" x 16.1" x 8.5"	32.2 lbs	10810128115367
ASD-UBN-18WH-2P	810128115377	20 (2)	20.2" x 19.1" x 6.5"	28.9 lbs	10810128115374
ASD-UBN-18BR	810128117807	20	19.2" x 16.1" x 8.5"	32.2 lbs	10810128117804
ASD-UBN-24WH	810128115384	12	25.2" x 12.2" x 6.9"	22.8 lbs	10810128115381
ASD-UBN-24WH-2P	810128115391	12 (2)	25.2" x 12.2" x 6.5"	34.6 lbs	10810128115398
ASD-UBN-24BR	810128117814	12	25.2" x 12.2" x 6.9"	22.8 lbs	10810128117811
ASD-UBN-32WH	810128115407	12	33.2" x 12.2" x 6.9"	33.1 lbs	10810128115404
ASD-UBN-40WH	810128115414	6	41.2" x 8.2" x 5.2"	20.6 lbs	10810128115411
ASD-UBN-48WH	810128115421	6	49.1" x 8.2" x 5.2"	25.4 lbs	10810128115428

For most up-to-date spec sheets please refer to asd-lighting.com